



APPLICATION SHEET

Fixed flowmeters

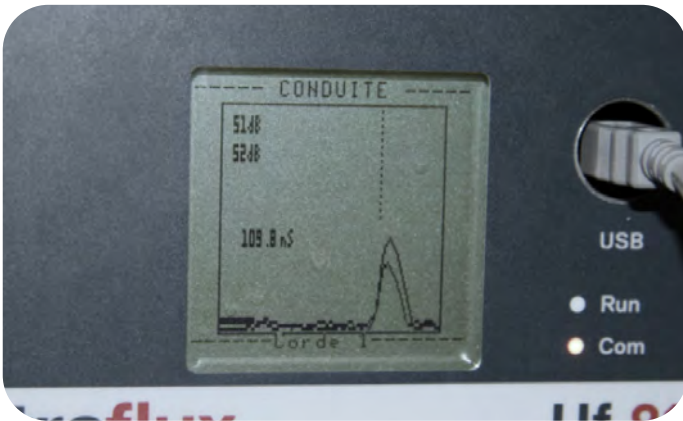
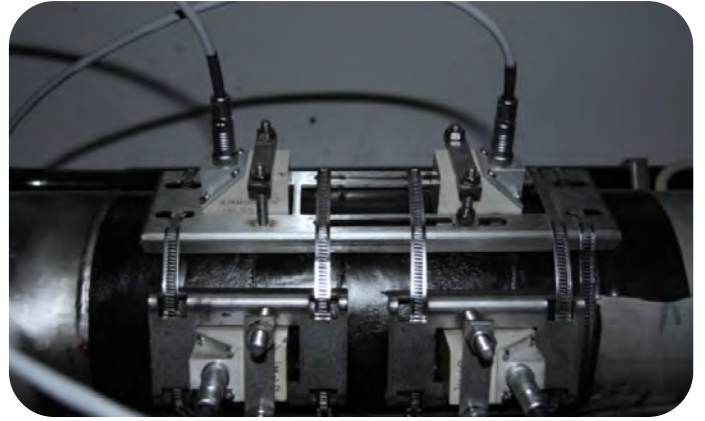
Full pipes

Drinking water / Raw water / Waste water

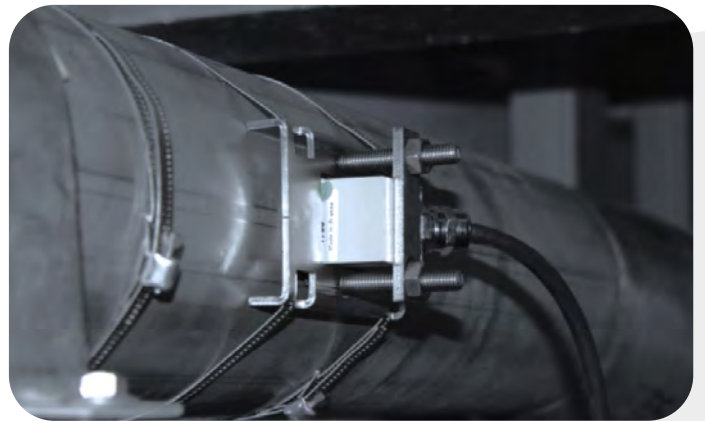
Flow measurement – External transducers / Clamp-on



Measurement on thickened sludge – Achères wastewater treatment plant – France



Verification of measurement quality



Measurement on sandy water



Measurement of plant discharges into the natural environment

Flow measurement – Insertion transducers



Flow measurement of water intake – Méry-sur-Oise water treatment plant – France

Applications

Drinking water

- Flow measurement and metering in treatment plant processes
- Flow measurement / monitoring of supply networks

Wastewater

- Flow measurement at lift stations
- Measurement on network, sludge circulation, thickened sludge, sandy water...
- Measurement at treatment plant inlet/outlet

Raw water

- Flow measurement of drinking water plant inlets
- Flow measurement of discharges into the natural environment
- Flow measurement on cooling circuits

Available flowmeters



Minisonic



Uf-811
up to 2 measurements



Uf-821
up to 4 measurements



Uf-831
up to 8 measurements



External probes / clamp-on



Insertion probes

Services – Engineering

- **On-site services**

- Comparative measurements

- Commissioning assistance

- Periodic preventive maintenance visits

- On-site technical assistance (after-sales service)

- **Project design**

- **Hydraulic fluid behavior study (CFD)**

- For precision optimisation

- **On-site dimensional inspection (dimensional arm / 3D scan)**

- **Design of customised pipe spools**



2, Lieu-dit l'Archette
72400 La Ferté Bernard
FRANCE
+33 2 43 60 28 60

faureherman.com